



Sylvera and Article 6

Presentation for the Third Plenary of the A6IP

19 March 2024

Incentivizing investment in real climate action

Delivering market-leading intelligence

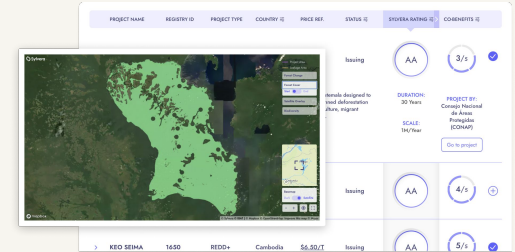
1. Build Project-Type-Specific Frameworks

- Impossible to capture nuances with a one-size-fits-all framework
- Meticulous, peer-reviewed, publicly available frameworks test project design, carbon accounting, and impact claims
- If you cannot evaluate a REDD+ project and a Renewables project with the same framework

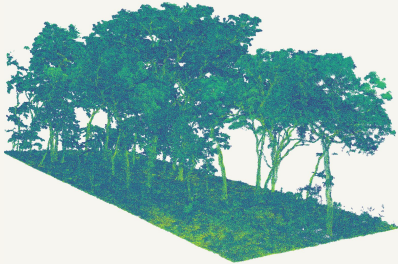


2. Complete Comprehensive Data Extraction

- Data from project design documentation (PDD) and every monitoring report are extracted, cleaned and organized in order to analyze
- Project developer is contacted for additional information



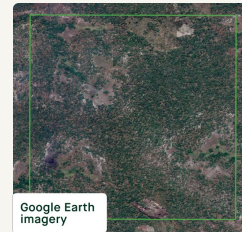
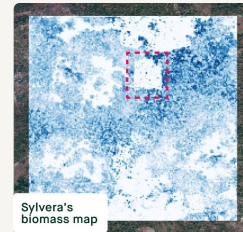
3. Reconstruct Project Model



- Build proprietary models, leveraging multiple data sources, to assess additionality and business as usual scenario.
- Nature-based solutions: optical, radar and LiDAR data used to validate emissions reductions/removals.

- Tech-based solutions: use our own financial models to evaluate project economics.

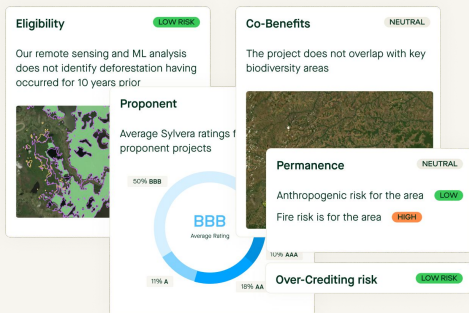
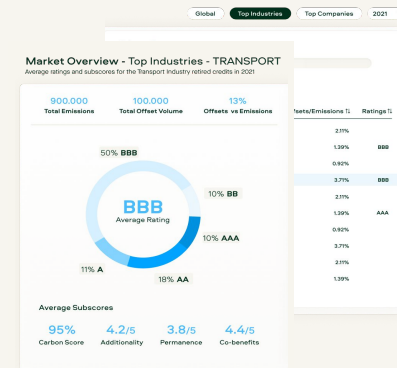
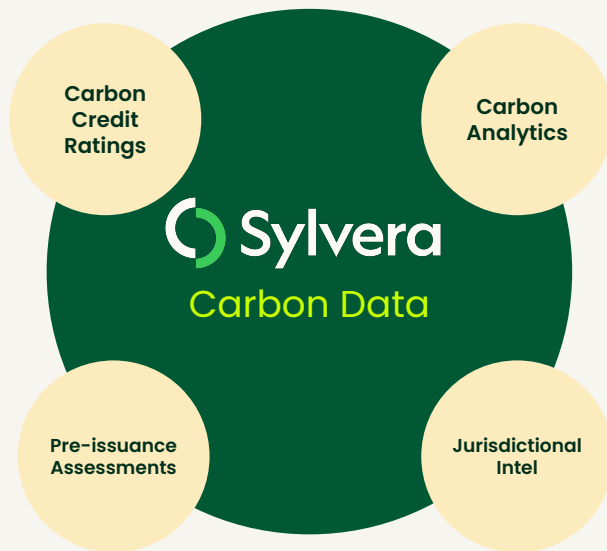
4. Test with Independent Data



- Expert analysts leverage advanced machine learning (ML) technology to assess projects.
- Verified, independent data and Sylvera's proprietary data are used to test the accuracy of credit issuances and claims.
- For example, we use market-leading geospatial ML models when rating nature-based solutions.

Sylvera product suite

Our core data products



The Sylvera Rating System

What S&P is to debt & capital markets,
Sylvera is to voluntary carbon markets.

Sylvera's scale easily communicates quality and risk.



All Projects

PROJECT NAME	PROJECT TYPE	COUNTRY	PRICE REF.	STATUS	SDGS	SYLVERA RATING	CARBON SCORE	ADDITIONALITY	PERMANENCE	CO-BENEFITS
>	REDD+	Guatemala	NA	Issuing		AA	210%	4/5	3/5	3/5
>	REDD+	DR Congo	\$11.00/T	Issuing		AA	122%	4/5	3/5	4/5
>	REDD+	Cambodia	\$12.75/T	Issuing	 	AA	121%	4/5	3/5	5/5
> TAMBOPATA Verra, 1067	REDD+	Peru	\$3.50/T	Issuing		AA	104%	4/5	4/5	4/5

The Sylvera Rating System

What S&P is to debt & capital markets,
Sylvera is to voluntary carbon markets.

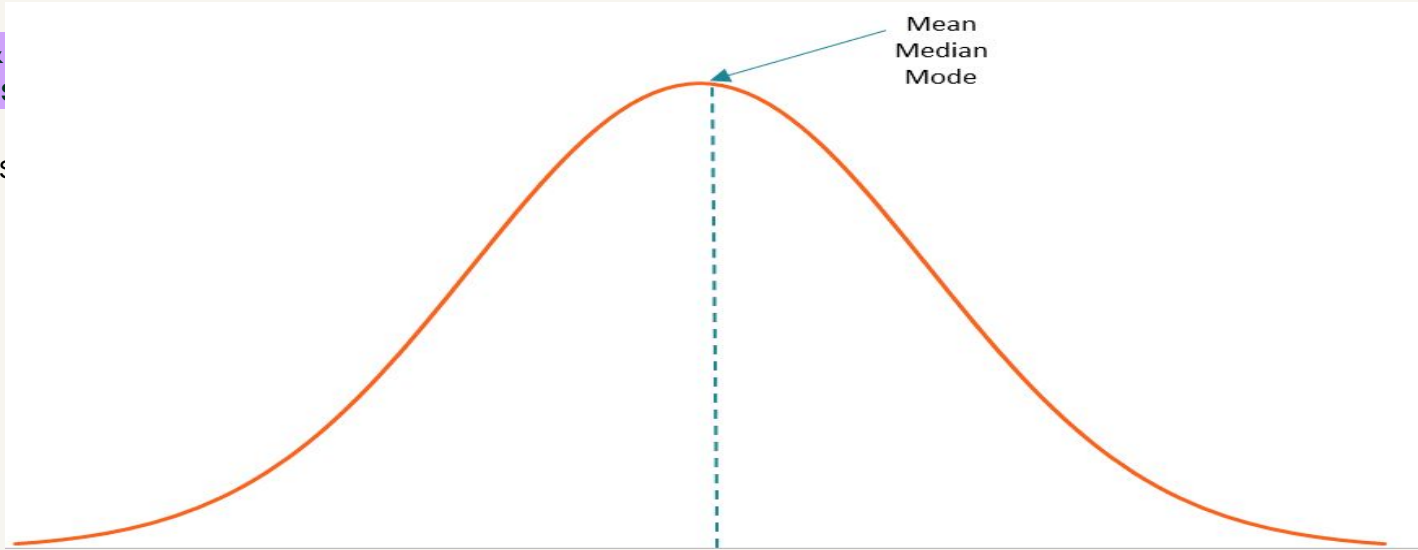
Sylvera's scale easily communicates quality and risk.



The Sylvera Rating System

What S&P
Sylvera is

Sylvera's s



AAA

AA

A

BBB

BB

B

C

D

Highest Rating



Lowest Rating